

Lincoln Peak Base Area Redevelopment - Phase II
Lincoln Peak Village - Gadd Brook Residences - Phase IIB
Warren, Vermont 05674

Bid & Permit Set

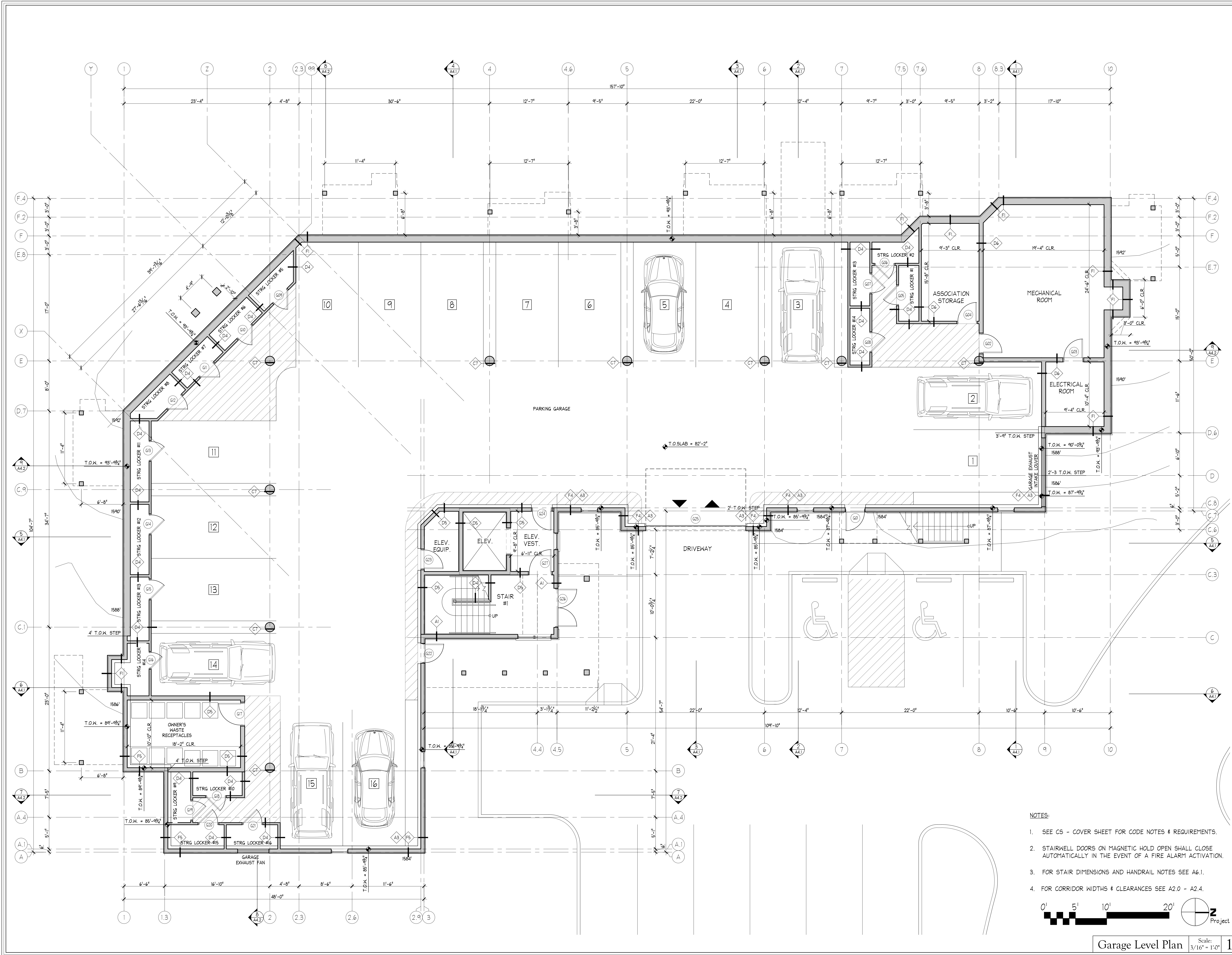
Drawn By: JH
Checked By: JE, JS
© Copyright

| NO. | REVISIONS |
|-----|-----------|
| | |
| | |
| | |
| | |

DATE: 01.30.15

Garage Level
Floor Plan

A2.0



- NOTES:
- SEE CS - COVER SHEET FOR CODE NOTES & REQUIREMENTS.
 - STAIRWELL DOORS ON MAGNETIC HOLD OPEN SHALL CLOSE AUTOMATICALLY IN THE EVENT OF A FIRE ALARM ACTIVATION.
 - FOR STAIR DIMENSIONS AND HANDRAIL NOTES SEE A6.1.
 - FOR CORRIDOR WIDTHS & CLEARANCES SEE A2.0 - A2.4.



Garage Level Plan Scale: 3/16" = 1'-0" 1

S:\Projects\Lincoln Peak\Lincoln Peak Base Area Redevelopment - Phase II\Lincoln Peak Village - Gadd Brook Residences - Phase IIB\A2.0 - Garage Level Floor Plan.dwg