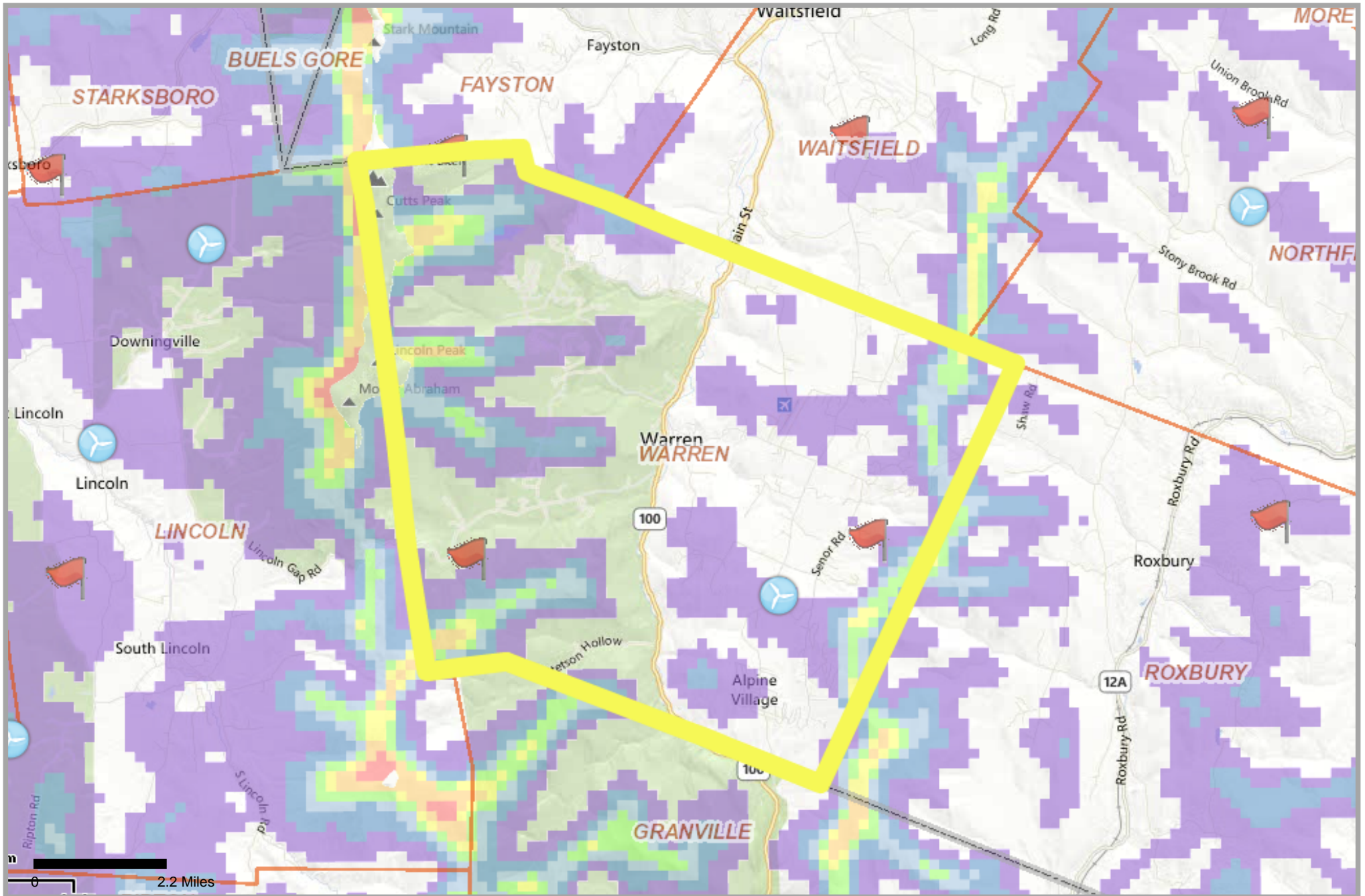


## WARREN: Wind



**1 Existing Wind Sites:**

| Type            | Existing Sites | Existing Sites Capacity (kW) |
|-----------------|----------------|------------------------------|
| Net Metered     | 1              | 2                            |
| Non-Net Metered | 0              | 0                            |
| <b>TOTAL »</b>  | <b>1</b>       | <b>2</b>                     |

**Potential Wind Development Areas (Acres):**

| Scale                        | Class 1<br>(10-11<br>mph) | Class 2<br>(12-13<br>mph) | Class 3<br>(13-14<br>mph) | Class 4<br>(15-16<br>mph) | Class 5<br>(16-17<br>mph) | Class 6<br>(17-18<br>mph) | Class 7<br>(19-25<br>mph) |
|------------------------------|---------------------------|---------------------------|---------------------------|---------------------------|---------------------------|---------------------------|---------------------------|
| Residential 30<br>meter      | 7,092                     | 2,113                     | 1,235                     | 815                       | 246                       | 179                       | 4                         |
| Small Commercial<br>50 meter | 0                         | 633                       | 705                       | 484                       | 418                       | 764                       | 281                       |
| Large Commercial<br>70 meter | 0                         | 0                         | 0                         | 722                       | 410                       | 830                       | 662                       |

This [graphic](#), developed by Windustry, depicts a useful reference for the scale of wind systems. For example, residential scale wind, modeled at a 30 meter hub height in the Atlas and in the Windustry graphic, corresponds to smaller systems, such as the Earth Turbine 2500 (2.5 kW) or the Bergey Excel (10 kW, most of the existing wind sites in Vermont are about 10 kW). Small commercial (50 meter hub height) and large commercial (70 meter hub height) wind correspond to progressively larger wind turbines.

**Town: Warren County: Washington**

Population: 1731 • % of Total Pop: 0.28% • Pop. Rank: 100 • Pop.

» Density: 43.2 • Pop. Density Rank: 105

Area: 40.1 Square Miles • 103.8 Square Kilometers • 25664 Acres • %

» of Total Area: 0.42% • Area Rank: 117

Number of Buildings: 1470 • % of Total: 0.5% • Rank: 58 • Number

» of Households: 2212

» Electricity Consumption : 2005-2010 (MWh)

| Type                                | 2005   | 2006   | 2007   | 2008   | 2009   | 2010   |
|-------------------------------------|--------|--------|--------|--------|--------|--------|
| Commercial & Industrial Consumption | 20,394 | 19,685 | 25,835 | 20,919 | 20,017 | 20,475 |
| Residential Consumption             | 16,298 | 15,394 | 15,383 | 15,293 | 19,350 | 14,901 |
| TOTAL                               | 36,692 | 35,079 | 41,218 | 36,213 | 39,368 | 35,377 |

» Electricity Savings : 2005-2010 (MWh)

| Type                            | 2005 | 2006 | 2007 | 2008 | 2009 | 2010  |
|---------------------------------|------|------|------|------|------|-------|
| Commercial & Industrial Savings | 23   | 129  | 225  | 47   | 148  | 938   |
| Residential Savings             | 57   | 133  | 245  | 344  | 153  | 198   |
| TOTAL                           | 81   | 262  | 470  | 391  | 301  | 1,137 |

Average Residential kWh Consumption & Savings

» by Household: 2005-2010

| Type                    | 2005  | 2006  | 2007  | 2008  | 2009  | 2010  |
|-------------------------|-------|-------|-------|-------|-------|-------|
| Residential Consumption | 7,355 | 6,947 | 6,942 | 6,902 | 8,724 | 6,737 |
| Residential Savings     | 26    | 60    | 111   | 155   | 69    | 90    |

Residential & Commercial/Industrial Thermal

» Savings (MMBTU): 2005-2010

| Type                            | 2005 | 2006 | 2007 | 2008 | 2009 | 2010 |
|---------------------------------|------|------|------|------|------|------|
| Residential Savings             | 0    | 0    | 0    | 0    | 408  | 307  |
| Commercial & Industrial Savings | 0    | 0    | 0    | 0    | 40   | -75  |
| TOTAL                           | 0    | 0    | 0    | 0    | 448  | 232  |